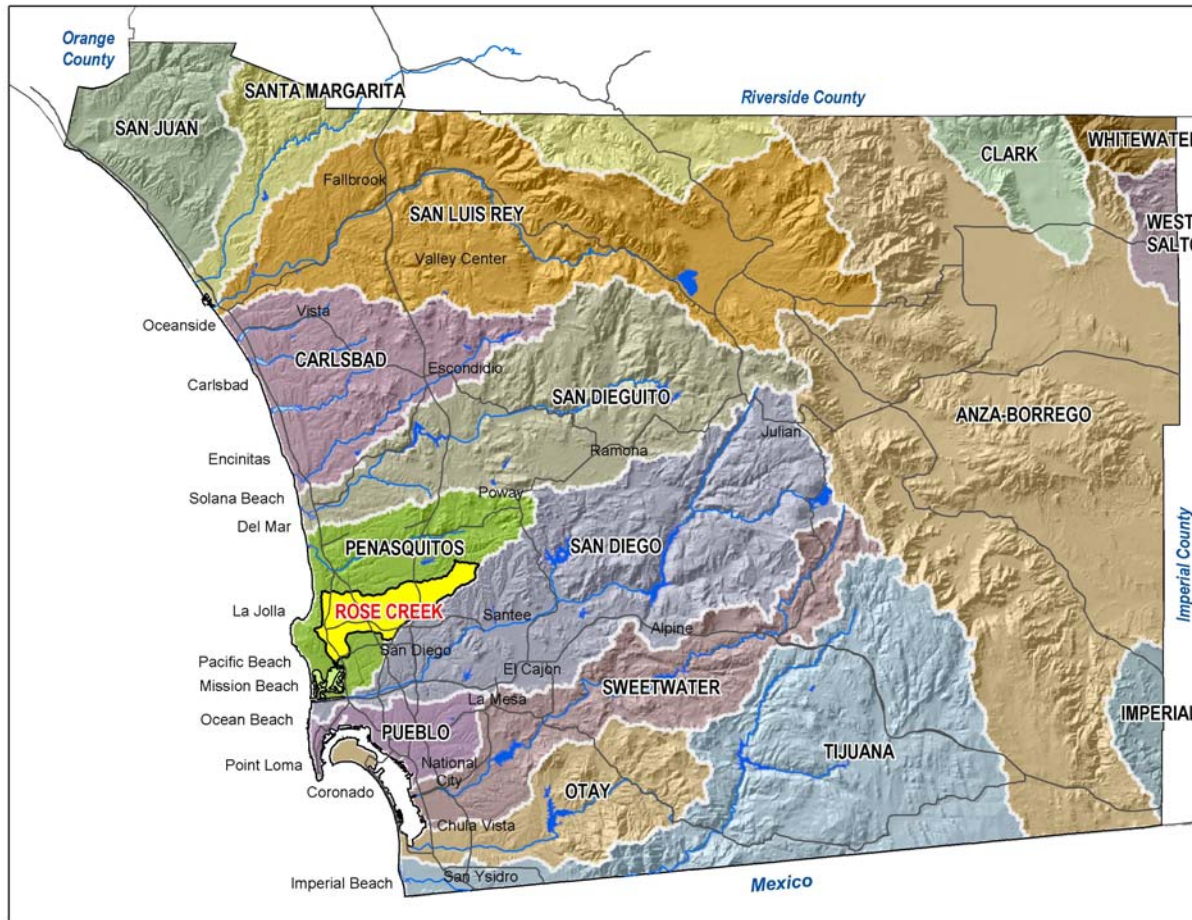

Rose Creek Watershed Opportunities Assessment

An opportunity for the City of San Diego to help
guide improvements to the
Rose Creek Watershed
NR&C Committee March 21, 2007



Rose Creek Watershed



Purpose

- Create a comprehensive assessment of existing conditions, opportunities and constraints for habitat protection, habitat restoration, cultural resources, public access, public safety and water quality.
- Provide recommendations for improvement.
- Make the Assessment and backup technical studies readily available to all those working to make improvements to the watershed.



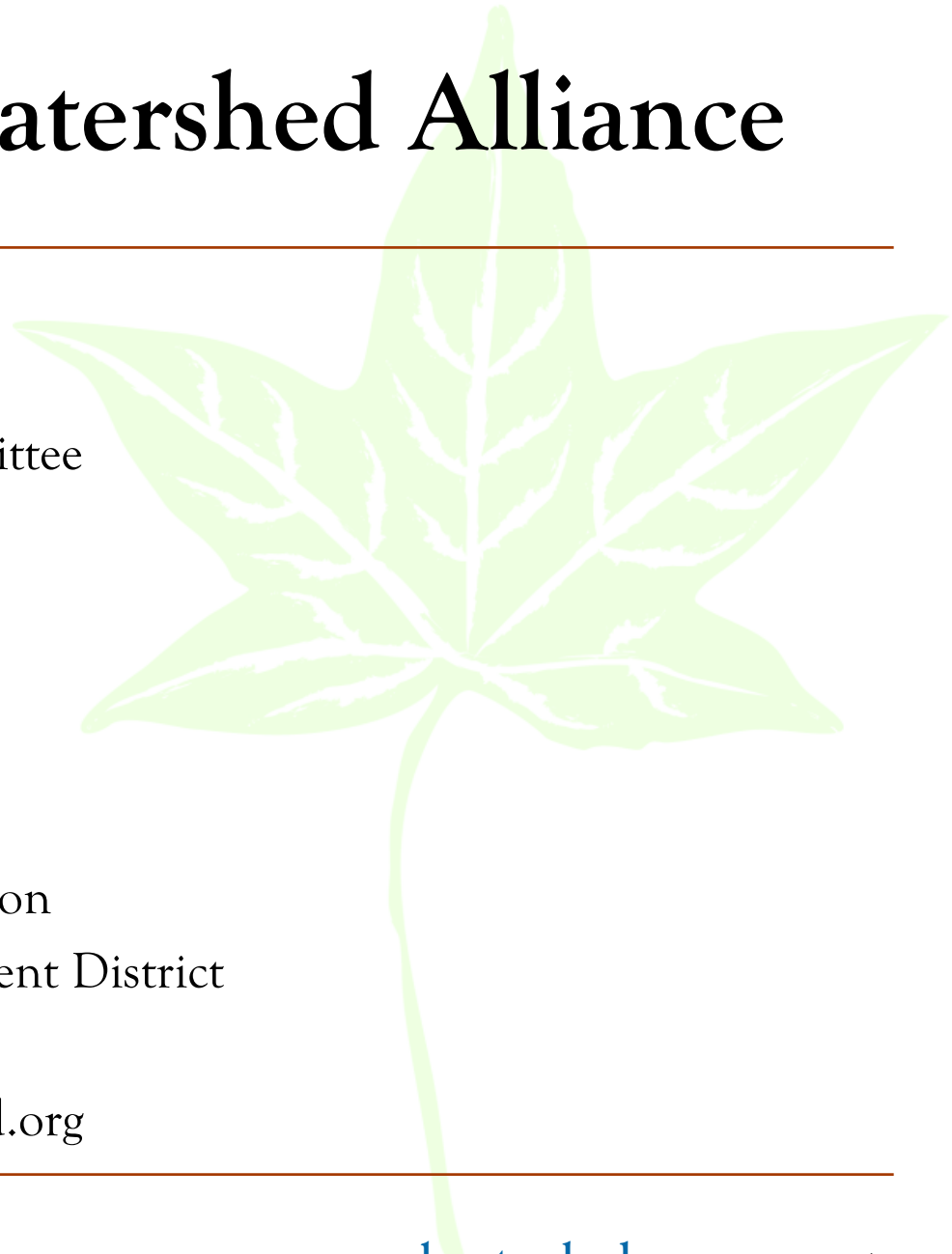
Funders and Supporters

- California Coastal Conservancy
- County of San Diego
- San Diego Foundation
- City of San Diego
- UCSD Natural Reserve System
- Regional Water Quality Control Board
- Wetlands Recovery Project



Rose Creek Watershed Alliance

- Friends of Rose Creek
- Friends of Rose Canyon
- Marian Bear Natural Park Committee
- Rose Canyon Recreation Council
- Clairemont Town Council
- San Diego Audubon
- Nobel Recreation Council
- Friends of Stevenson Canyon
- San Diego County Bicycle Coalition
- Pacific Beach Business Improvement District
- Convener: San Diego Earthworks
- Website: www.rosecreekwatershed.org



Recommendations

- PRO-ACTIVE not REACTIVE
- Biological Issues
- Cultural Issues
- Public Safety
- Recreational Trails
- Water Resources



PRO-ACTIVE not REACTIVE

- Conservation Banking (Rec 2.1)
 - Make City land available for restoration by non-city organizations
- Land Management and Ownership (Rec 2.2.5)
 - City splits: Multiple City owners: Parks, Metro, Streets; Multiple Police Beats; Five Council Districts
 - NCTD
 - CALTRANS
 - Miramar MCAS
 - UCSD
 - Private property owners



Biological Issues

- Enhance the Connection to Mission Bay (Rec 2.2.1)
- Control Invasive Exotic Species (Rec 2.2.2)
- Restore Native Habitats (Rec 2.2.3)
- Protect Wildlife Corridors (Rec 2.2.4)



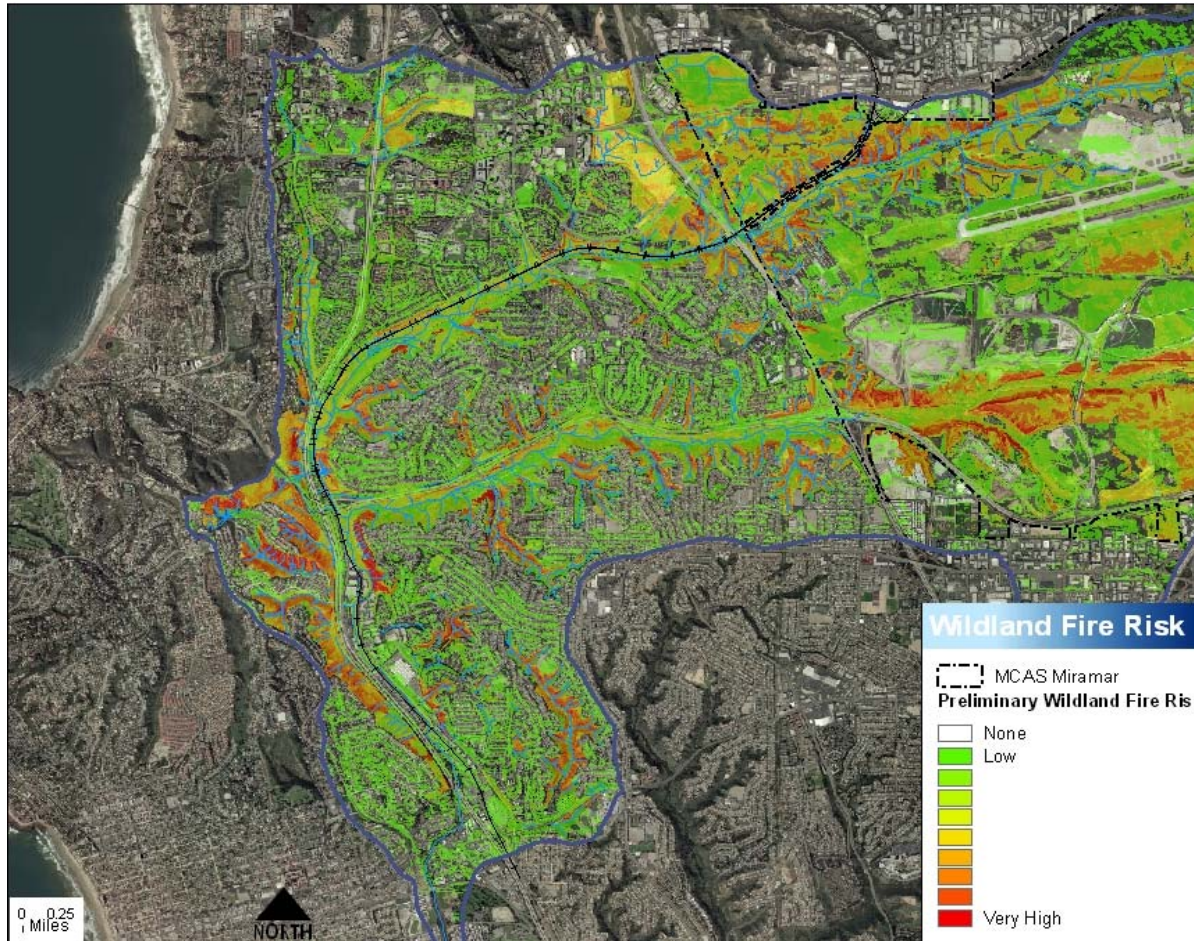
Cultural Resources



- Document and Protect Cultural Resources (Rec 2.3.1)
- Develop Cultural Resources Interpretive Opportunities (Rec 2.3.3)



Public Safety



- Conduct a Fire Risk Management Study (Rec 2.4.1.4)



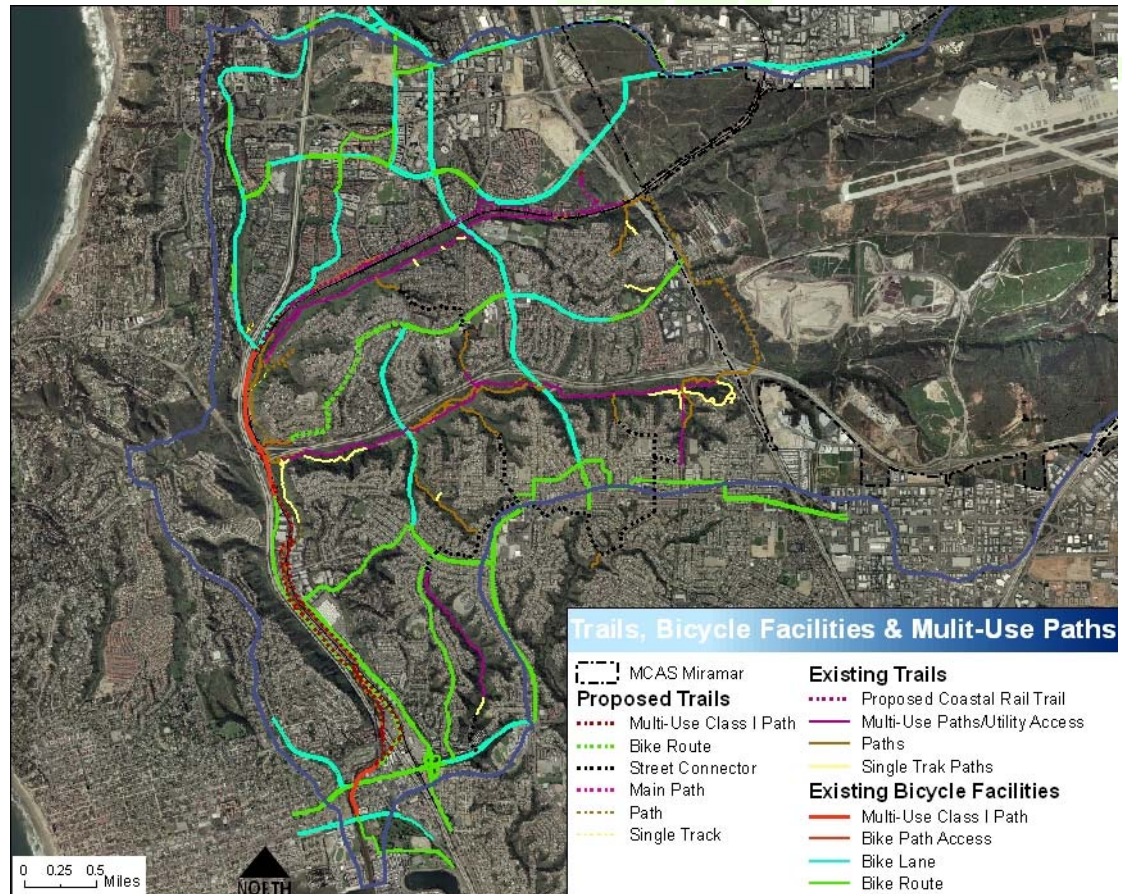
Public Safety

- Reduce Illegal Activities on Open Space Lands (Rec 2.4.3)



Recreational Trails

- Provide watershed-wide trail maps at main entrance points (Rec 2.5.1)
- Connect Clairemont and University City to Mission Bay (Rec 2.5.3)



Recreational Trails

- Connect trails in Rose and San Clemente Canyons (Rec 2.5.4)
- Create safe and legal railroad crossings (Rec 2.5.5)



Water Resources



- Improve understanding of hydrology in the watershed (Rec 2.6.1)
- Reduce erosion (Rec 2.6.2)
- Remove concrete flood channels where feasible (Rec 2.6.3)
- Reduce storm water runoff (Rec 2.6.4)



Key Issue - Funding

- Public Safety Costs
 - Police Department
 - City Attorney
 - Environmental Services
 - Property owners, tenants and visitors
- Opportunities and Obligations
 - New Funding Opportunities
 - Prop 84; Transnet, IRWMP, WCB
 - Example of an opportunity (potentially) lost
 - Addressing the challenges: mitigation and maintenance
 - Proposed Restoration Policy
 - Maintenance Assessment District



Police Department

- Status of the Homeless POP in Rose Canyon



Police Department

- Rose Creek POP Area

ROSE CREEK AREA



Police Department

• Personnel Hours

Officer Conti (September 26 2006 – February 02 2007)

- 20 in-custody to jail x 4 hours each = **80 hours**
- 32 Misdemeanor Citations x 3 hours each = **96 hours**
- Served 15 Stay Away Orders
- Out-of service time, foot patrol, citizen contacts, intelligence gathering: **100 hours**

Beach Team

- 500 hours in the last three years (2003 to 2006)

HOT Team (2 officers)

- 2 hours/month x12 months x3 years = **72 hours**
(Contacted in Rose Creek)
- 8 hours/month (contacted outside of Rose Creek) = **96 Hours**



Police Department

- Cost in Service
(Per Year?)

- Day in Jail:
\$65/person/day
- Personnel hours:
\$52/hour
 - Officer Conti(4 Months):
276 hours = \$14,352
 - Beach Team(3 Years):
500 hours = \$26,000
 - HOT Team(3 Years):
168+ hours = \$8,736 +



Police Department

Crime and Associated Factors

- 3 Officer-Involved Shootings
- Illegal Drug Use, Sales, and Distribution
- Possession and Sales of Stolen Property
- Burglaries
- Thefts
- Car Prowls
- Trespassing/Illegal Lodging
- Criminal Threats
- Arson/Illegal Camp Fires
- Armed/Strong-Arm Robberies
- Mental Illness



Police Department

ROSE CREEK PROJECT

3 YEAR HISTORY

TYPE	2004	2005	2006	% CHANGE
ARRESTS	145	135	114	-21.4%
CITATIONS	73	59	79	8.2%
CRIME CASES	177	192	195	10.2%
FI'S	182	143	286	57.1%
TOTAL	577	529	674	16.8%

PROJECT TIME COMPARISON

TYPE	09/25/2005-01/31/2006	09/25/2006-01/31/2007	% CHANGE
ARRESTS	50	47	-6.0%
CITATIONS	25	43	72.0%
CRIME CASES	70	56	-20.0%
FI'S	85	118	38.8%
TOTAL	230	264	14.8%

AGENT CONTI

TYPE	09/25/2006-01/31/2007
ARRESTS	20
CITATIONS	33
CRIME CASES	2
FI'S	30
TOTAL	85



City Attorney



- Rose Creek Prosecution
9/26/06 - 2/2/07
 - 1 DCA spending 20% time per week for ¼ year = \$4,836
 - Senior Clerk/Typist 20% time per week for ¼ year = \$2,950
 - Total for ¼ year = \$7,786, or \$31,144 per year
 - Conservative estimate, not considering other related crimes born of Rose Creek such as: theft, car prowls, arson, etc.



Environmental Services



Recent Cleanup in
Lower Rose
Creek on Streets
Division-owned
land

\$2,200/day:
Estimated total
cost \$18,700



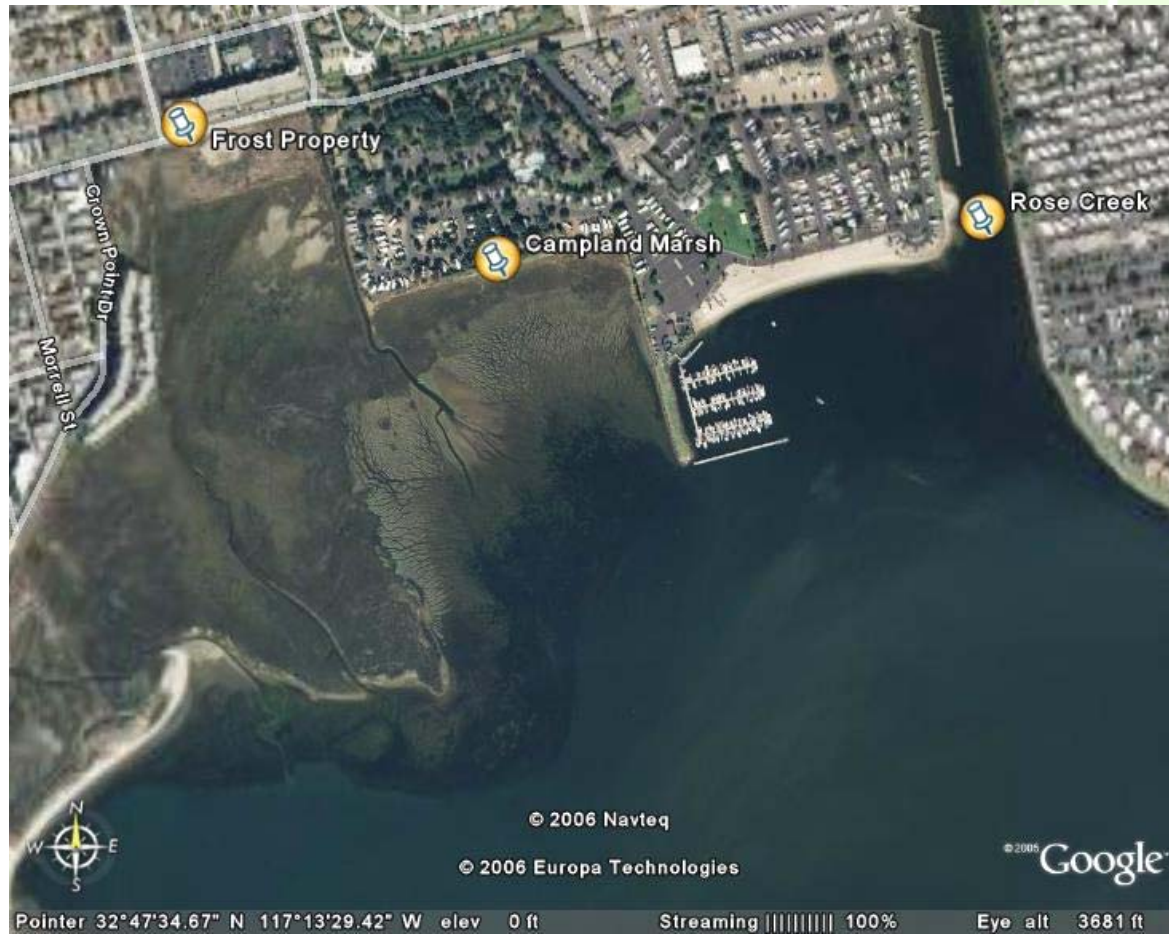
New Funding Opportunities

Proposition 84

- State Coastal Conservancy:
 - \$27 mil for coastal and bay watersheds within San Diego County
- Wildlife Conservation Board:
 - \$90 mil for NCCPs
 - \$25 mil to the UC Natural Reserve System
- Department of Water Resources:
 - \$91 mil for San Diego Region (Integrated Regional Water Management)



Frost Property Enhancement Opportunity (Potentially) Lost?



Frost Marsh Enhancement

- SITE: “Frost Property” 3 acres of fill originally purchased by the City of San Diego to mitigate use of sludge beds on Fiesta Island
- PROPOSAL by San Diego Audubon: Restore fill area *using non-city funds* to coastal salt marsh and transitional habitat



Requested Committee Actions

1. Conceptually approve the Rose Creek Watershed Opportunities Assessment as a guidance document for City activities in the watershed.
2. Schedule the Assessment to return to the NR&C committee after review through the Development Services Department.
3. Form a subcommittee of Districts Two and Six to work with the RCW Alliance and the Mission Bay Committee and others to begin planning to create the wetlands in Mission Bay proposed in the 1994 Mission Bay Plan for the mouth of Rose Creek. Authorize the subcommittee to send letters supporting funding for this effort.
4. Direct the RCW Alliance to distribute the draft restoration policy widely to City staff and interested parties for comment and return with revisions to the NR&C committee for future action.
5. Request the RCW Alliance to report back to NR&C with results of the Rose Creek Maintenance Assessment District Survey.

